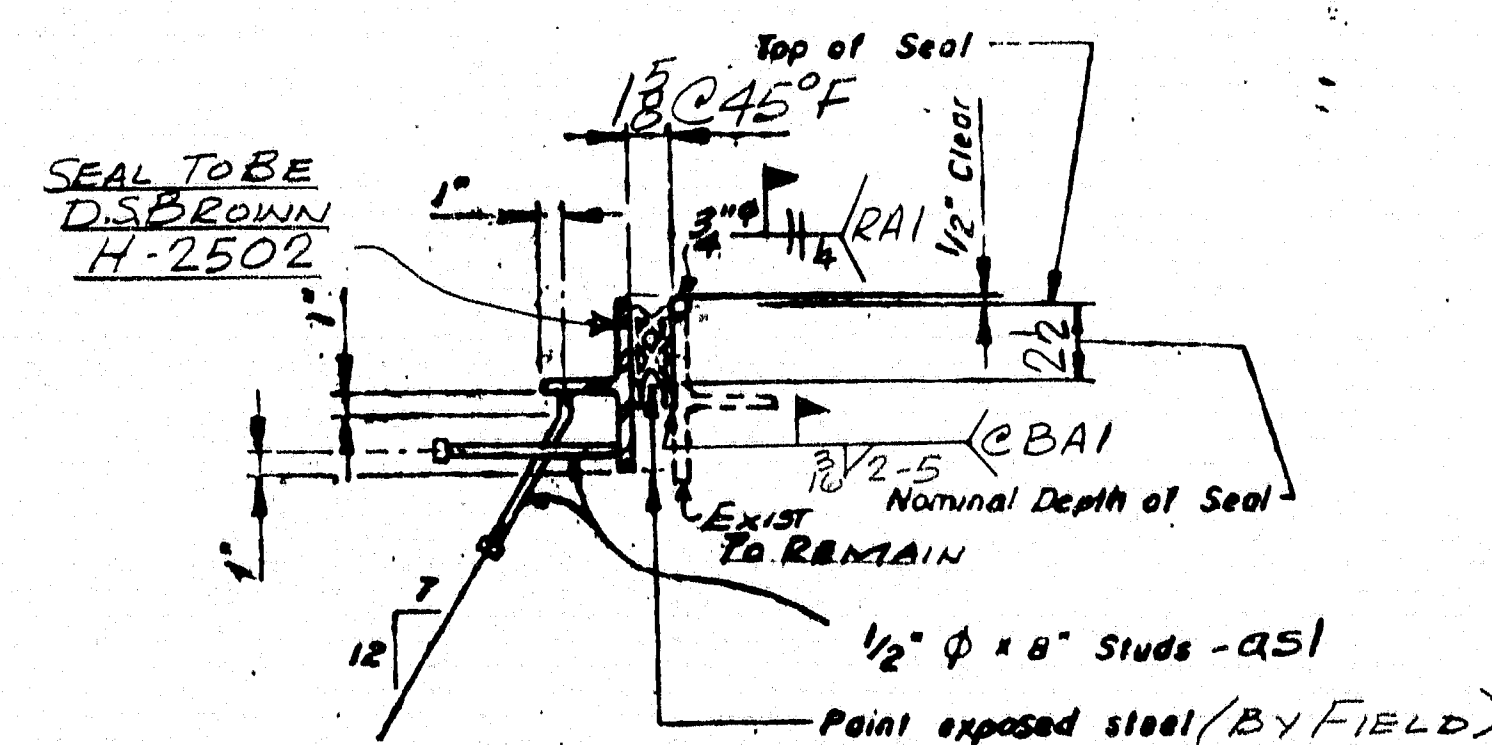


MATERIAL: ASTM-A36 & A3 NOTED
BOLTS: ASTM-A325
HOLES: A3 NOTED.
ELECTRODES: SEE WELDING PROC.
SURFACE PREP: SSPC-SP6
PRIMER: NONE

105-300



ADJUSTMENT DEVICES

TYPICAL SECTION

STATE OF MAINE
DEPARTMENT OF TRANSPORTATION
CONSTRUCTION DIVISION

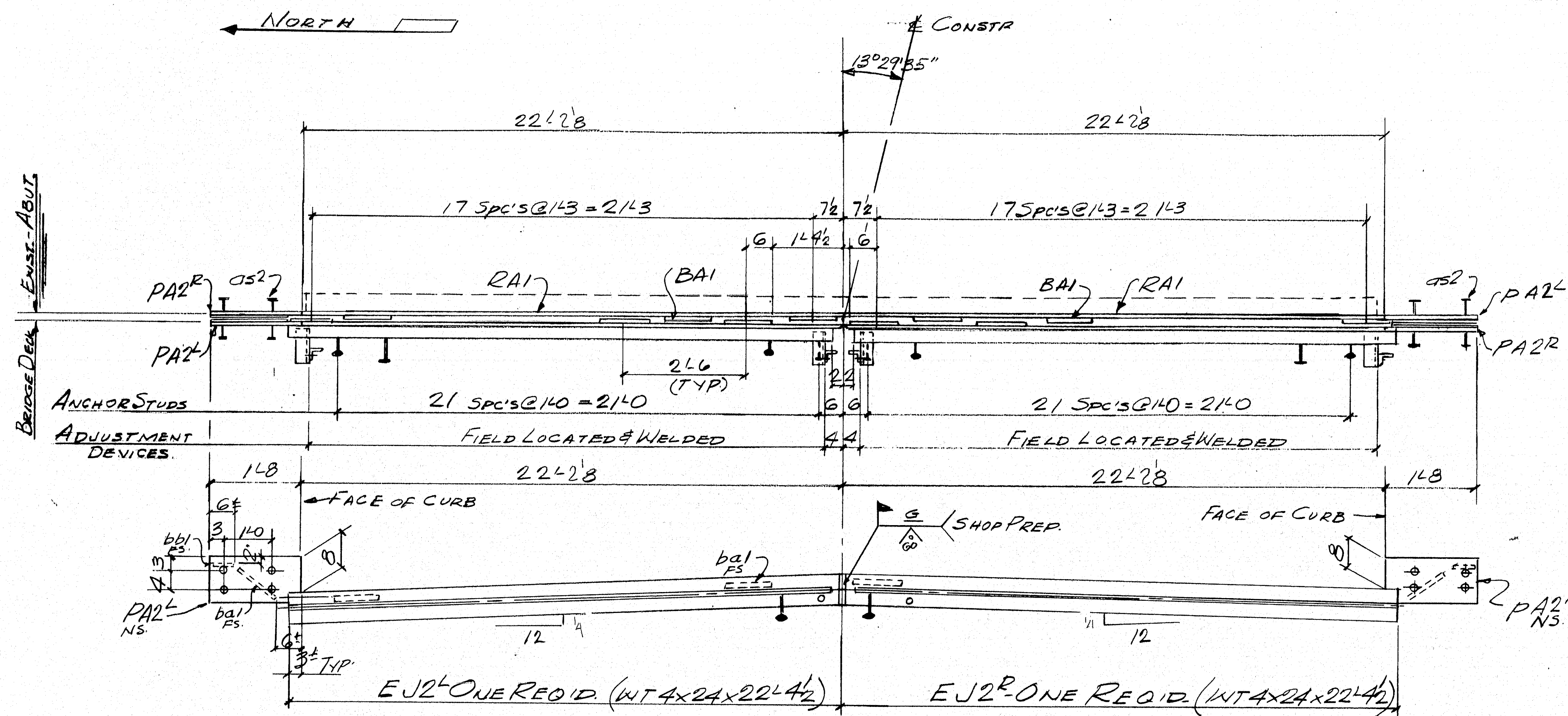
☒ NO EXCEPTIONS TAKEN ☐ EXCEPTIONS NOTED

JUL 13 1992

☒ RETURNED FOR CORRECTIONS ☐ REJECTED
DOCUMENT REVIEWED IN ACCORDANCE WITH SECTION 3
IF STANDARD SPECIFICATIONS

John C. [Signature] *P. [Signature]*

DRAWING COVERS: <u>ARMORED JOINT MOD. - TYPE I</u> <u>ABUTMENT NO. 1</u>	
DATE SUB.	PROJECT <u>I-95 SOUTHBOUND</u> <u>OVER LINE RD.</u>
	LOCATION <u>SMYRNA & LUDLOW, ME</u>
	ARCHITECT
	ENGINEER <u>STATE OF MAINE D.O.T.</u>
DATE APP.	CUSTOMER <u>C.P.M. CONSTRUCTORS</u>
DATE DIST.	



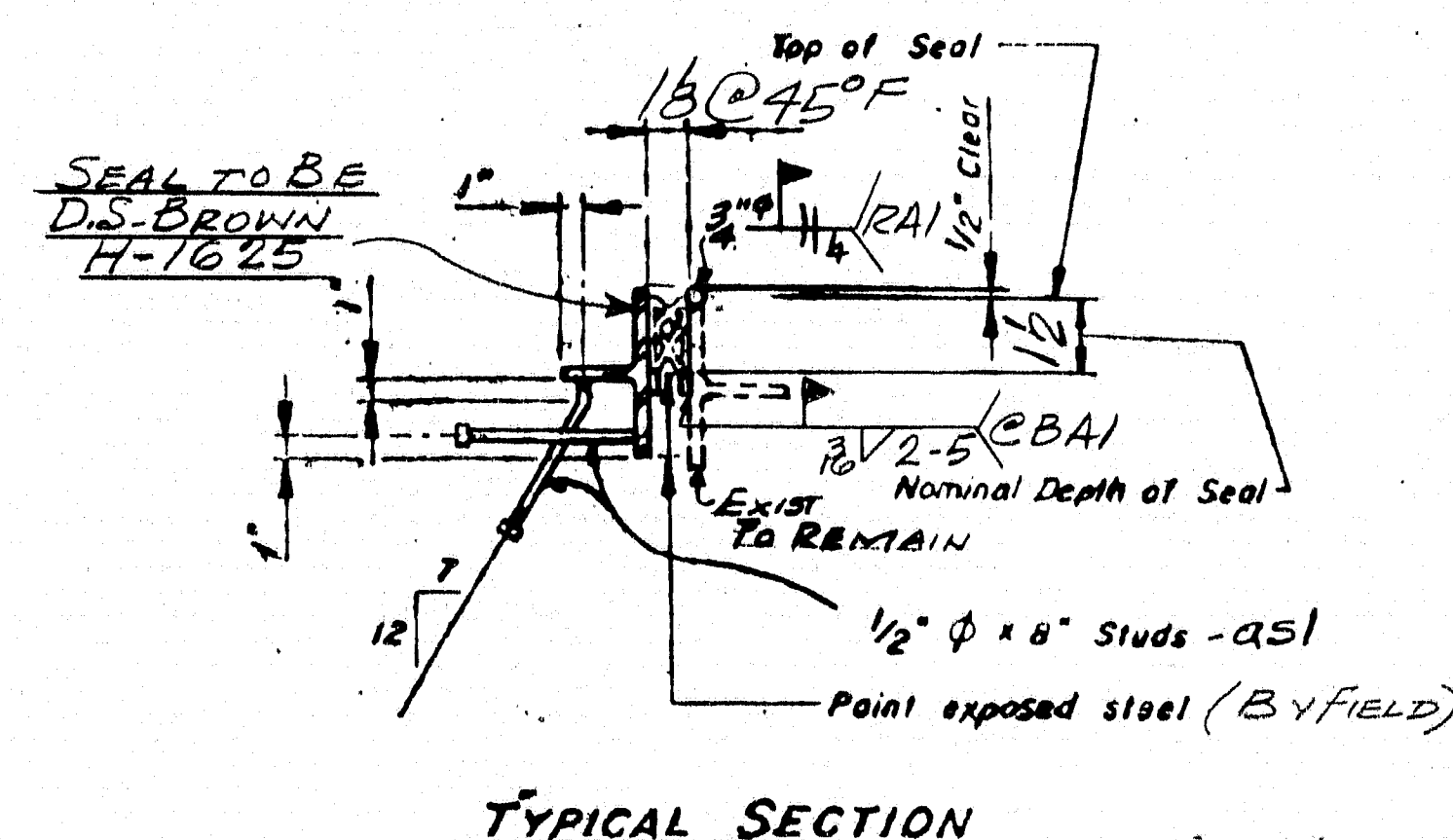
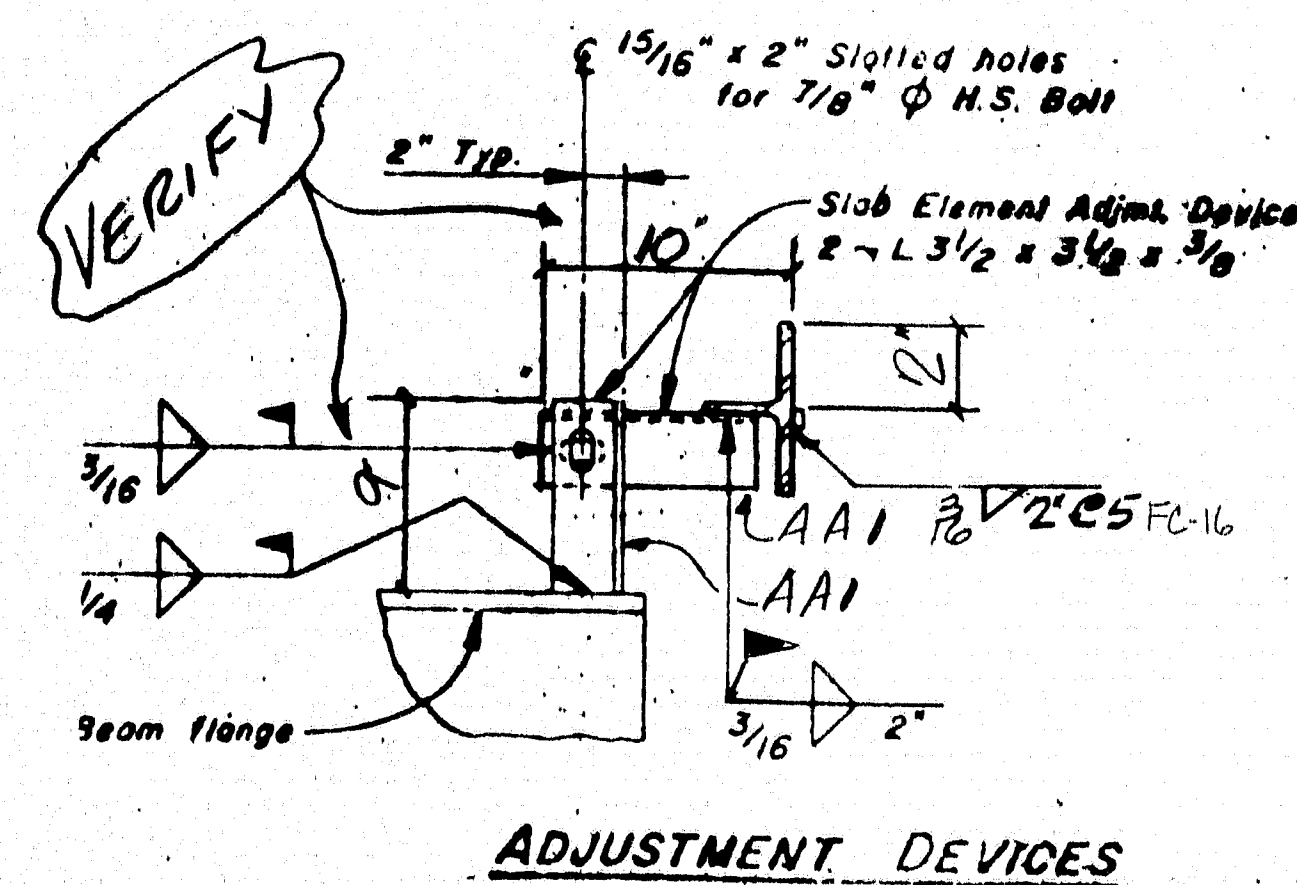
BILL OF MATERIAL				
QTY	MARK	SHAPE	LENGTH	REMARKS
1	EJ2L	WT 4x24	22'4 1/2	
1	EJ2R	DO	22'4 1/2	
18	RAI	BAR 1x3/8	1	0
44	OS1	2" ANG. STUDS	1	0
16	AA1	43/8x3/8x5/8	9	
8	FIELD	7/8 BOLTS	24	N/A 2 WASH.
2	PA2L	2x3x104	1	8
2	PA2R	DO	1	8
4	BAI	BAR 1x3/8	1	0
4	BB1	DO	1	5
16	OS2	2" ANG. STUDS	4	
2	RAI	3/4" ROD	22'28"	
18	BAI	BAR 1x3/8	1	0
1	FIELD	COMP. SEAL	50	0 DSBROWN H-1625 W/ADHESIVE

PIN No. 4158.00

PROJ. No. IR-IM-95-9(130)

BRIDGE No. 6091

PAY ITEM No. 520-241



105-301

MATERIAL: ASTM A36 & A3 NOTED
 BOLTS: ASTM A325
 HOLES: A3 NOTED
 ELECTRODES: SEE WELDING PROC.
 SURFACE PREP: SSPC-SP6
 PRIMER: NONE

STATE OF MAINE
 DEPARTMENT OF TRANSPORTATION
 CONSTRUCTION DIVISION

☒ NO EXCEPTIONS TAKEN ☐ EXCEPTIONS NOTED

JUL 13 1992

☐ RETURNED FOR CORRECTIONS ☐ REJECTED

DOCUMENT REVIEWED IN ACCORDANCE WITH SECTION 305 OF STANDARD SPECIFICATIONS

REV. NO. DATE DESCRIPTION

1 6/25 PER MAINE D.O.T.

HOLES A3 NOTED

PAINT SEE NOTE ABOVE

DRAWING COVERS: ARMOR REPAIR MOD. - TYPE I ABUTMENT NO. 2

DATE SUB. PROJECT LOCATION ARCHITECT ENGINEER CUSTOMER

195 SOUTHBOUND OVER LINERD. SMYRNA & LUDLOW, ME. STATE OF MAINE D.O.T. C.P.M. CONSTRUCTORS

MERRIMACK SHEET METAL 119 HALL ST. CONCORD N.H. 03301 Tel. (603) 224-7765 Fax (603) 224-7925

DRAWN BY: J.R.F. CKD BY: J.R.F. JOB NO. 5760 DWG. NO. 2